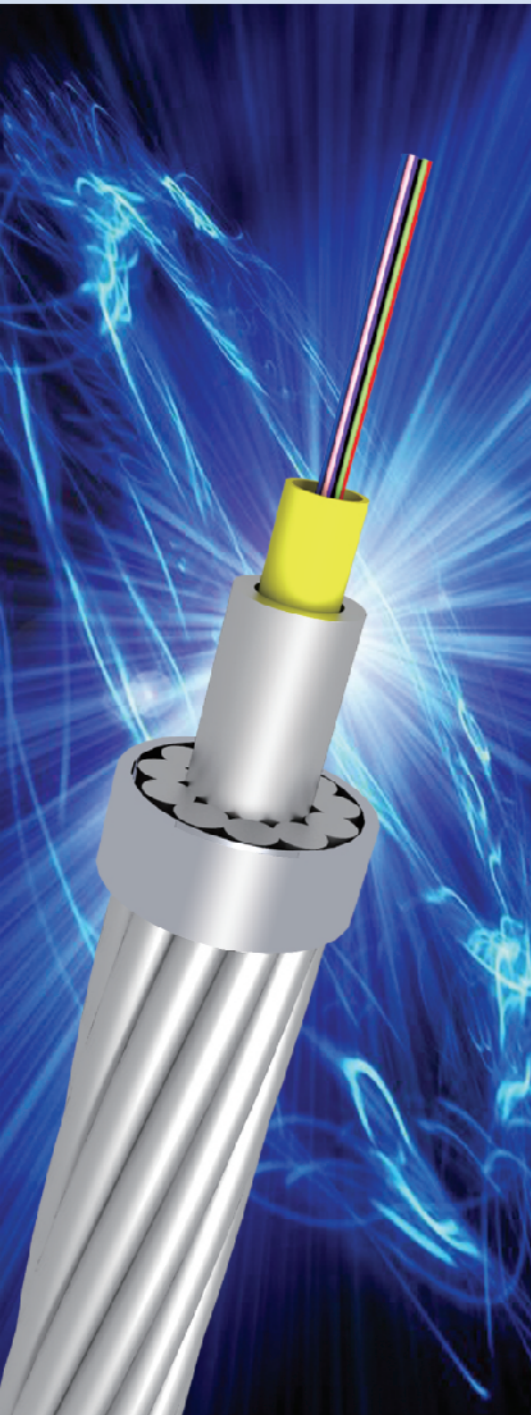
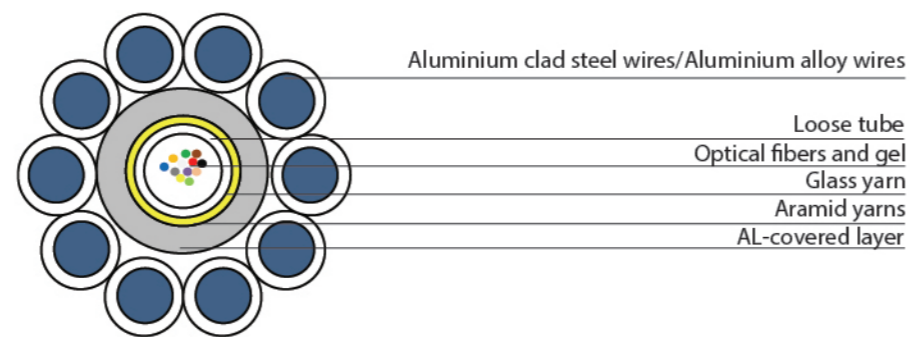


Typical Designs of Central Type Aluminum Tube OPGW



Central Type Aluminum Tube OPGW Single/Double Armour Layers

The Central Type Aluminum Tube is surrounded by single or double layers of aluminium clad steel wires(ACS) or mix ACS wires and aluminium alloy wires.



Characteristic and Application

- Good anti-corrosion performance.
- Material and structure are uniform, good resistance to vibration fatigue.
- Short circuit current has small effect on the optical fiber transmission properties.
- Good anti-lightning performance.

Typical Parameters:

Single Layer

ZTT Standard	Fiber Count(Max)	Diameter (mm)	Weight (kg/km)	RTS (kN)	Short Circuit (kA ² s)
OPGW-73 [55.7;39]	12	11.6	407	55.7	39.0
OPGW-84 [66.0;50]	16	12.4	471	66.0	50.0
OPGW-102 [83.6;71.8]	24	13.6	580	83.6	71.8
OPGW-109 [88.2;82.1]	24	14.0	613	88.2	82.1
OPGW-100 [79.4;69.7]	32	13.6	561	79.4	69.7
OPGW-107 [84.2;80.4]	36	14.0	596	84.2	80.4
OPGW-119 [97.7;96.2]	36	14.8	674	97.7	96.2
OPGW-111 [89.0;86.7]	48	14.4	628	89.0	86.7
OPGW-119 [94.1;98.2]	48	14.8	665	94.1	98.2
OPGW-136 [104.5;130.5]	60	16.0	752	104.5	130.5
OPGW-144 [110.2;148.4]	60	16.4	794	110.2	148.4

Double Layers

ZTT Standard	Fiber Count(Max)	Diameter (mm)	Weight (kg/km)	RTS (kN)	Short Circuit (kA ² s)
OPGW-165 [96.1;221.5]	24	17.0	699	96.1	221.5
OPGW-198 [115.3;315.9]	24	18.6	830	115.3	315.9
OPGW-215 [126.7;376.5]	48	19.6	916	126.7	376.5
OPGW-264 [149.7;561.7]	48	21.6	1112	149.7	561.7
OPGW-308 [171.7;764.8]	60	23.4	1300	171.7	764.8

* The above designs are ZTT's typical options, and ZTT can provide any specific cable according to your requirement.